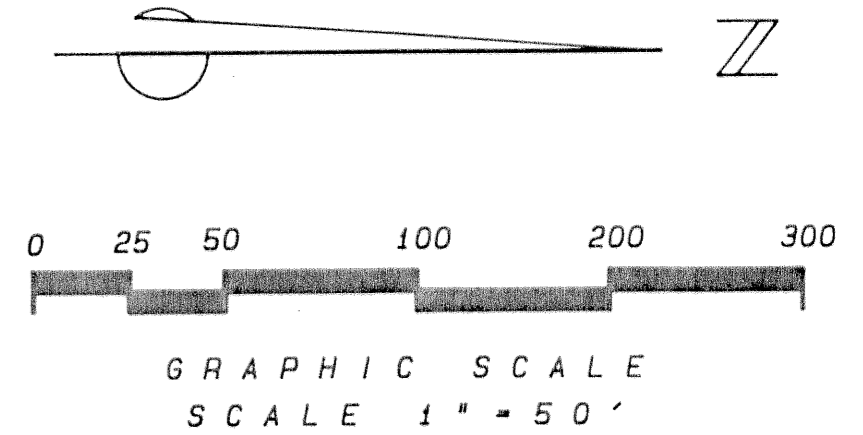
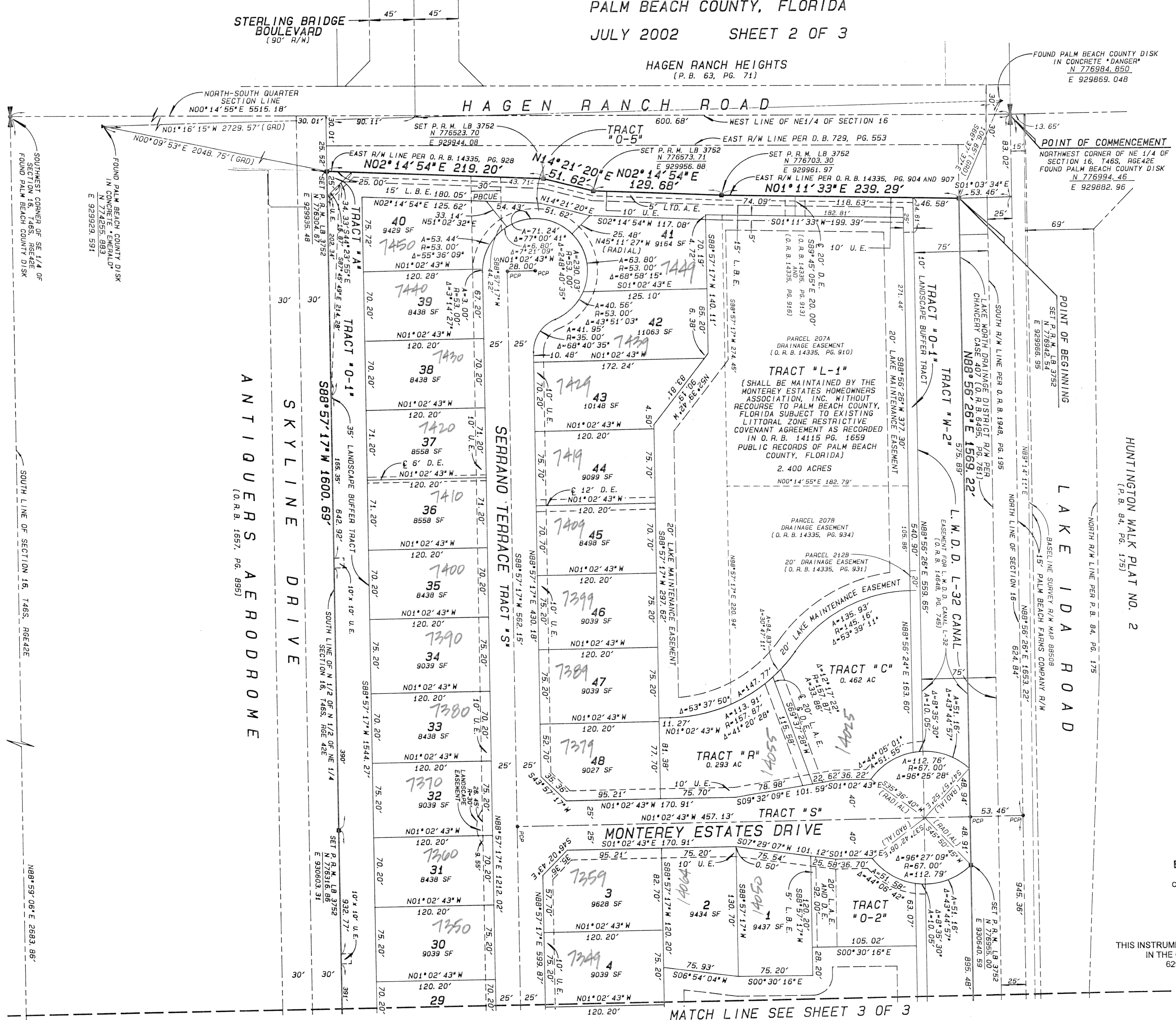


BETHESDA, A P. U. D.

LYING IN THE NORTHEAST QUARTER OF SECTION 16, TOWNSHIP 46 SOUTH, RANGE 42 EAST PALM BEACH COUNTY, FLORIDA

JULY 2002 SHEET 2 OF 3

HAGEN RANCH HEIGHTS (P.B. 63, PG. 71)



LEGEND

A	DENOTES ARC
AC	DENOTES ACRES
CB	DENOTES CHORD BEARING
CHD	DENOTES CHORD LENGTH
CONC	DENOTES CONCRETE
D.B.	DENOTES DEED BOOK
D.E.	DENOTES DRAINAGE EASEMENT
GRD	DENOTES GROUND
L.A.E.	DENOTES LAKE ACCESS EASEMENT
L.B.E.	DENOTES LANDSCAPE BUFFER EASEMENT
LTD. A.E.	DENOTES LIMITED ACCESS EASEMENT
L.W.D.D.	DENOTES LAKE WORTH DRAINAGE DISTRICT
MON	DENOTES MONUMENT
O.R.B.	DENOTES OFFICIAL RECORD BOOK
P.B.	DENOTES PLAT BOOK
PBCUE	DENOTES PALM BEACH COUNTY UTILITY EASEMENT
PCP	DENOTES PERMANENT CONTROL POINT
PG(S)	DENOTES PAGE(S)
P.R.M.	DENOTES PERMANENT REFERENCE MONUMENT
R	DENOTES RADIUS
RGE	DENOTES RANGE
R/W	DENOTES RIGHT OF WAY
T	DENOTES TOWNSHIP
U.E.	DENOTES UTILITY EASEMENT
Δ	DENOTES CENTRAL ANGLE
SF	DENOTES SQUARE FEET
⊙	DENOTES CENTERLINE

COORDINATE NOTE

STATE PLANE COORDINATES ARE GRID DATUM, NAD 83, 1990 ADJUSTMENT, FLORIDA EAST ZONE, COORDINATE SYSTEM 1983 STATE PLANE TRANSVERSE MERCATOR PROJECTION, LINEAR UNIT = US SURVEY FOOT, ALL DISTANCES ARE GROUND, SCALE FACTOR = 1.0000271, N01°16'15"W (PLAT BEARING) ("EMERALD" TO "DANGER") = 00°00'00" CLOCKWISE BEARING ROTATION (PLAT TO GRID), N01°16'15"W (GRID BEARING)

HUNTINGTON WALK PLAT NO. 2 (P.B. 84, PG. 175)

LAKE IDA ROAD

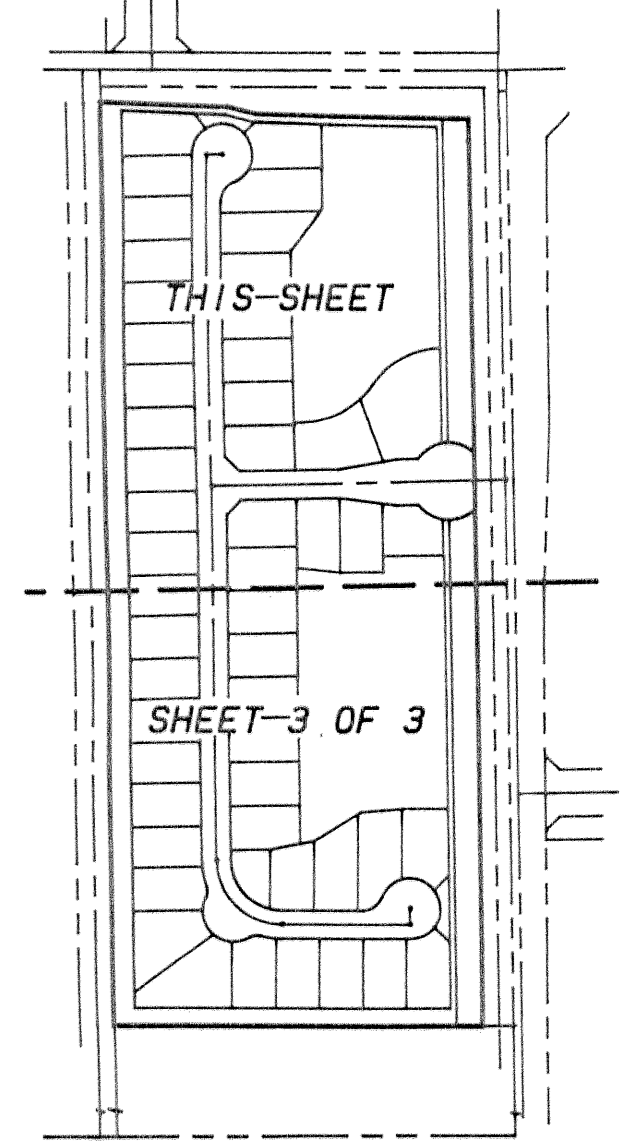
ANTIQUERS AERODROME (O.R.B. 1657, PG. 895)

SOUTH LINE OF SECTION 16, T46S, R64E2E

SUBDIVISION BETHESDA
 PAGE 09
 FLOOD MAP # 2004
 ZONING PUD
 QUAD # 15
 SE
 TAX A/C
 PUD NAME BETHESDA

EWING AND SHIRLEY, INC.
 SURVEYORS AND MAPPERS
 CERTIFICATE OF AUTHORIZATION NO. 3752
 6295 LAKE WORTH ROAD • SUITE 13
 LAKE WORTH • FLORIDA • 33463
 TELE: (561)968-0421 • FAX: (561)968-0478

THIS INSTRUMENT WAS PREPARED BY KENT W. EWING, JR.
 IN THE OFFICE OF EWING AND SHIRLEY, INC.
 6295 LAKE WORTH ROAD, SUITE 13
 LAKE WORTH, FLORIDA 33463



MATCH LINE SEE SHEET 3 OF 3